



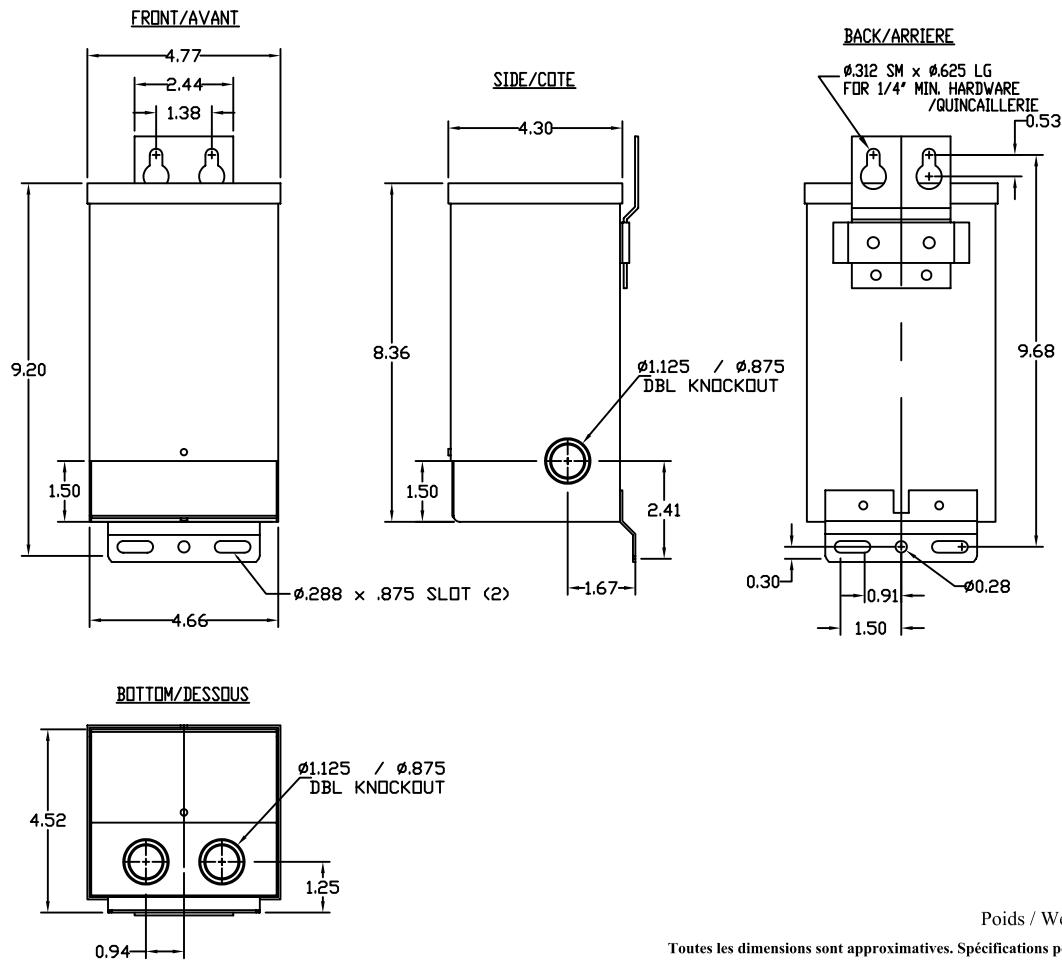
# SÉRIES DX SERIES

## 750 VA, # DE PIÈCE / PART # : DX 0750QHU

### SPÉCIFICATIONS ÉLECTRIQUES / ELECTRICAL SPECIFICATIONS

PHASE:	1	TENSION / PRIMARY PRIMAIRE / VOLTAGE	600	TENSION / SECONDARY SEC. / VOLTAGE	120/240
FREQ.:	60 Hz.				
CLASSE ISOL. INSUL. CLASS	F (155°C)				
ELEV. TEMP. TEMP. RISE	< 115°C				
		PRIMARY VOLTS	CONNECT PRIMARY LINES TO	INTER-CONNECT	CONNECT SECONDARY LINES TO
		600	H1 - H2		
		SECONDARY VOLT			
		120		X1 to X3 X2 to X4	X1 - X4
		240		X2 to X3	X1 - X4

### SPÉCIFICATIONS MÉCANIQUES / MECHANICAL SPECIFICATIONS: ( dimensions = pouces/Inches).



Poids / Weight : 8.6 Kg ( 19 lbs )

Toutes les dimensions sont approximatives. Spécifications peuvent changer sans préavis.  
All dimensions and weights are approximate. Specifications may change without notice.



NUMÉRO DE MODÈLE:  
MODEL NUMBER:  
**DX 0750QHU**

ZONE	REV	REVISION	DESCRIPTION	DATE	APPROVAL APPROB.

Dessiné par: SS  
Drawn by:

DWG NO. 71CUDX0750QHU

REV 00

DATE: APRIL 19th 2010

PAGE: 1 de 1