



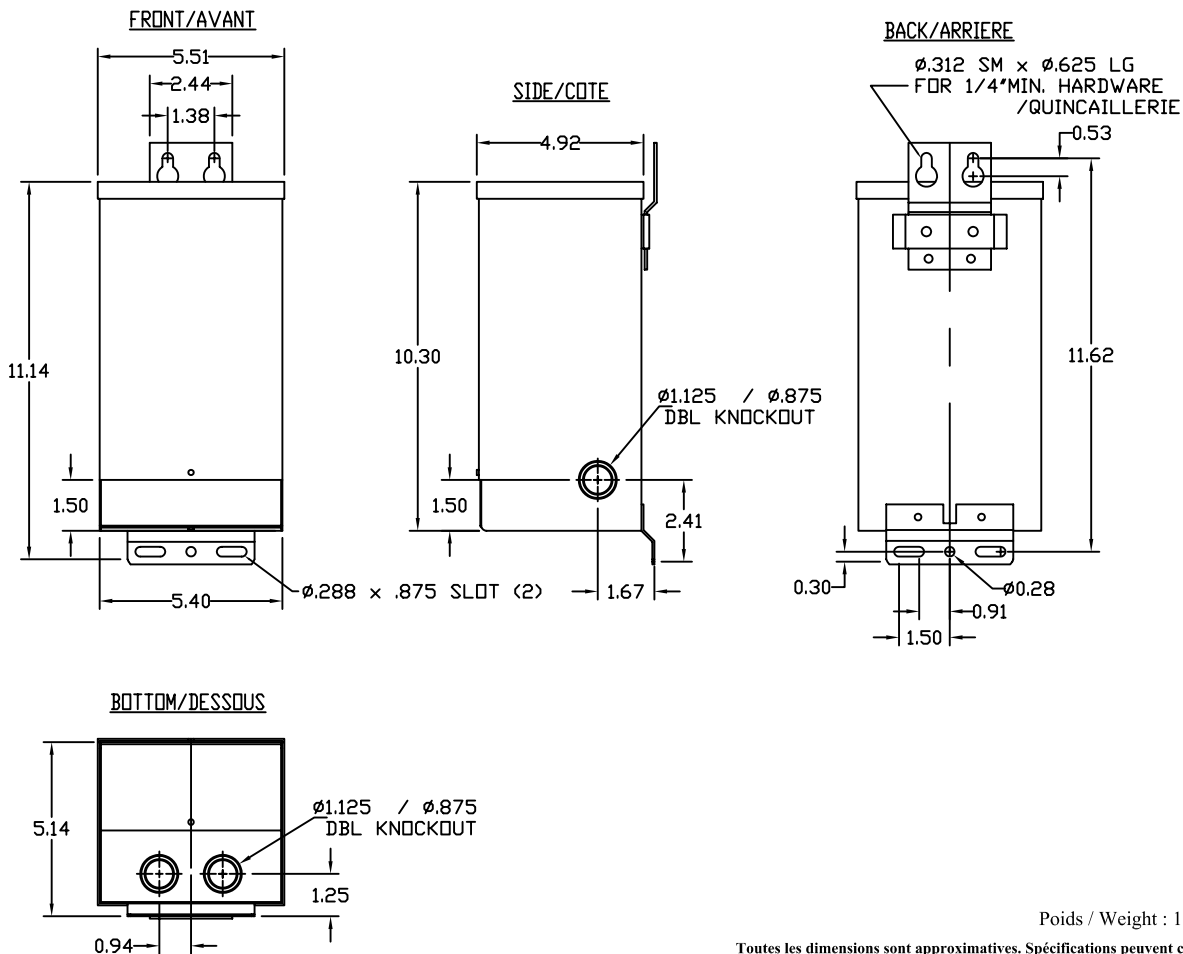
# SÉRIES DX SERIES

## 1500 VA, # DE PIÈCE / PART # : DX 1500QHU

### SPÉCIFICATIONS ÉLECTRIQUES / ELECTRICAL SPECIFICATIONS

|                              |          |   |                          |                                       |                            |
|------------------------------|----------|---|--------------------------|---------------------------------------|----------------------------|
| PHASE:                       | 1        | TENSION / PRIMARY<br>PRIMAIRE / VOLTAGE | 600                      | TENSION / SECONDARY<br>SEC. / VOLTAGE | 120/240                    |
| FREQ.:                       | 60 Hz.   |   |                          |                                       |                            |
| CLASSE ISOL.<br>INSUL. CLASS | H(180°C) |   |                          |                                       |                            |
| ELEV. TEMP.<br>TEMP. RISE    | < 115°C  | PRIMARY VOLTS                           | CONNECT PRIMARY LINES TO | INTER-CONNECT                         | CONNECT SECONDARY LINES TO |
|                              |          | 600                                     | H1 - H2                  |                                       |                            |
|                              |          | SECONDARY VOLT                          |                          |                                       |                            |
|                              |          | 120                                     |                          | X1 to X3<br>X2 to X4                  | X1 - X4                    |
|                              |          | 240                                     |                          | X2 to X3                              | X1 - X4                    |

### SPÉCIFICATIONS MÉCANIQUES / MECHANICAL SPECIFICATIONS: ( dimensions = pouces/Inches).



Poids / Weight : 13.6 Kg ( 30 lbs )

Toutes les dimensions sont approximatives. Spécifications peuvent changer sans préavis.  
All dimensions and weights are approximate. Specifications may change without notice.



NUMÉRO DE MODÈLE:  
MODEL NUMBER:  
**DX 1500QHU**

|                       |     |          |             |      |                     |                              |                          |           |
|-----------------------|-----|----------|-------------|------|---------------------|------------------------------|--------------------------|-----------|
| ZONE                  | REV | REVISION | DESCRIPTION | DATE | APPROVAL<br>APPROB. | Dessiné par:<br>Drawn by: SS | DWG NO.<br>71CUDX1500QHU | REV<br>00 |
| DATE: APRIL 19th 2010 |     |          |             |      |                     |                              | PAGE: 1 de 1             |           |